

# PHENOLIC & WOOD BLOCK RANGE

## Phenolics:

- CFC / HCFC free (ODP 0%)
- Class 0 UK Fire Compliance having low flame spread and low smoke emission in order to meet local fire regulations
- Rigid Closed Cell foam construction, thus resisting moisture ingress
- Thermally efficient ie low 'K' value, saving energy and Carbon Dioxide emissions.
- Ideally suited for use on cold and chilled water services (temperature range minus 180° C to 120° C)
- Suitable for mild steel, stainless steel and copper pipework, available from stock in sizes 1/2" NB to 6" NB (15mm - 159mm) and thicknesses from 15mm to 50mm.

(Full specification available on request.  
For full details please contact our  
sales department).



## Wood Blocks:

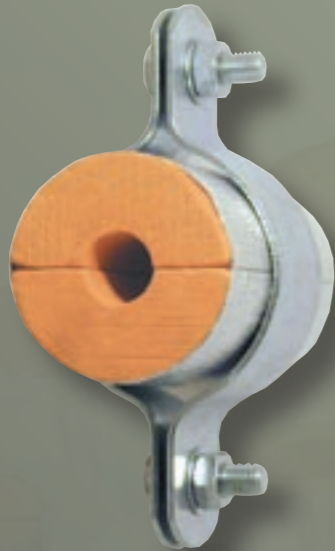
- Manufactured from Obeche wood, 100mm in length (longer lengths available to order).
- Foil facing for vapour sealing available to order thus reducing condensation.

Blocks can be 'notched out' for trace heating, allowing cables to be run alongside piping underneath insulation.

# PHENOLIC & WOOD BLOCK RANGE

All sections cut to 100mm lengths. Other sizes available to order.

## 15mm THICKNESS - For Copper Tube



Tube O.D.	Total O.D.	Clip	part no.
15mm	45mm	SZ1125D	FA1515
22mm	52mm	SZ1325D	FA2215
28mm	58mm	SZ5425D	FA2815
35mm	65mm	SZ1425D	FA3515
42mm	72mm	SZ7025D	FA4215
54mm	84mm	SZ8325D	FA5415
67mm	97mm	RZ1726D	FA6715
76mm	106mm	SZ10025D	FA7615
108mm	138mm	SZ1925D	FA9815
133mm	163mm	SZ9925D	FA9315
159mm	189mm	G62193M	FA9915

## 25mm THICKNESS - For Copper Tube

Tube O.D.	Total O.D.	Clip	part no.
15mm	65mm	SZ1425D	FA1525
22mm	72mm	SZ7025D	FA2225
28mm	78mm	SZ1625D	FA2825
35mm	85mm	SZ8325D	FA3525
42mm	92mm	SZ1725D	FA4225
54mm	104mm	RZ10026D	FA5425
67mm	117mm	RZ9826D	FA6725
76mm	126mm	SZ12525D	FA7625
108mm	158mm	SZ9925D	FA9825
133mm	183mm	G62186M	FA9325
159mm	209mm	G62208M	FA9925

## 20mm THICKNESS - For Copper Tube

Tube O.D.	Total O.D.	Clip	part no.
15mm	55mm	SZ5425D	FA1520
22mm	62mm	SZ1425D	FA2220
28mm	68mm	SZ1426D	FA2820
35mm	75mm	SZ7025D	FA3520
42mm	82mm	SZ1625D	FA4220
54mm	94mm	RZ1726D	FA5420
67mm	107mm	RZ10026D	FA6720
76mm	116mm	SZ1825D	FA7620
108mm	148mm	SZ15025D	FA9820
133mm	178mm	G62178M	FA9320
159mm	199mm	G62199M	FA9920

## 30mm THICKNESS - For Copper Tube

Tube O.D.	Total O.D.	Clip	part no.
15mm	75mm	SZ1625D	FA1530
22mm	82mm	SZ8325D	FA2230
28mm	88mm	SZ1725D	FA2830
35mm	95mm	RZ1726D	FA3530
42mm	102mm	SZ10025D	FA4230
54mm	114mm	SZ1825D	FA5430
67mm	127mm	SZ12525D	FA6730
76mm	136mm	SZ1925D	FA7630
108mm	168mm	SZ2025D	FA9830
133mm	193mm	G62193M	FA9330
159mm	219mm	G6221M	FA9930

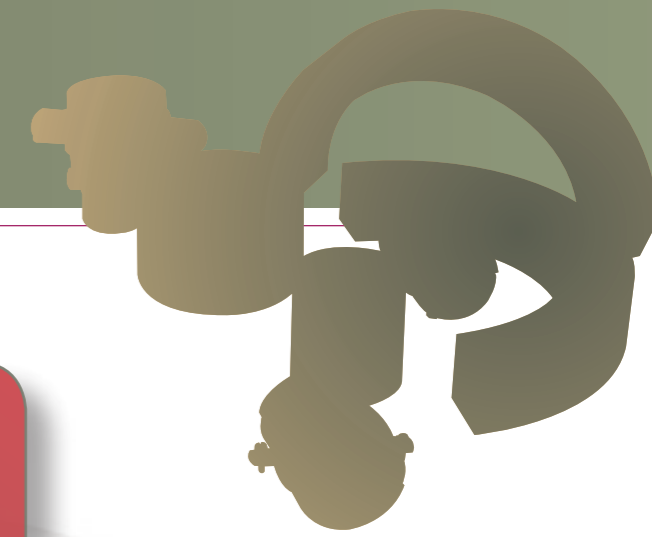
**Please note:**

All corresponding clip references are provided as a guide only in relation to suitability of phenolic fitting. In some cases a rubber lined clip will be supplied where the rubber will need to be removed prior to fitting in order to provide a more appropriate and closer fit.

Please note that the rubber lining is not designed to be used with phenolic blocks. Please therefore remove before assembly.

If you wish to discuss individual requirements, please contact our sales department.

# PHENOLIC & WOOD BLOCK RANGE



## 40mm THICKNESS - For Copper Tube

Tube O.D.	Total O.D.	Clip	part no.
15mm	95mm	RZ1726D	FA1540
22mm	102mm	SZ10025D	FA2240
28mm	108mm	SZ11025D	FA2840
35mm	115mm	SZ1825D	FA3540
42mm	122mm	SZ12525D	FA4240
54mm	134mm	SZ9325D	FA5440
67mm	147mm	SZ15025D	FA6740
76mm	156mm	SZ9925D	FA7640
108mm	188mm	G62186M	FA9840
133mm	213mm	G6221M	FA9340
159mm	239mm	G62244M	FA9940

## 15mm THICKNESS - For Steel Tube

Tube N.B.	Tube O.D.	Total O.D.	Clip	part no.
1/2	21mm	51mm	SZ1325D	FA0415
3/4	27mm	57mm	SZ5425D	FA0715
1	34mm	64mm	SZ1425D	FA0915
1 1/4	42mm	72mm	SZ7025D	FA1115
1 1/2	48mm	78mm	SZ1625D	FA1315
2	60mm	90mm	SZ1725D	FA1415
2 1/2	76mm	106mm	SZ10025M	FA1615
3	89mm	119mm	RZ1826D	FA1715
4	114mm	144mm	RZ1926D	FA1815
5	140mm	170mm	SZ2025D	FA1915
6	165mm	195mm	G62193M	FA2015

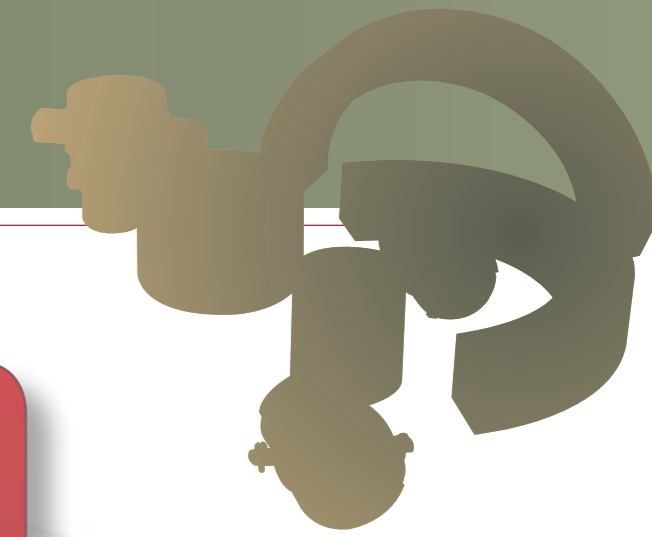
## 50mm THICKNESS - For Copper Tube

Tube O.D.	Total O.D.	Clip	part no.
15mm	115mm	SZ1825D	FA1550
22mm	122mm	SZ12525D	FA2250
28mm	128mm	SZ12525D	FA2850
35mm	135mm	SZ9325D	FA3550
42mm	142mm	RZ9326D	FA4250
54mm	154mm	RZ15026D	FA5450
67mm	167mm	SZ2025D	FA6750
76mm	176mm	G62178M	FA7650
108mm	208mm	G62208M	FA9850
133mm	233mm	G62232M	FA9350
159mm	259mm	G62259M	FA9950

## 20mm THICKNESS - For Steel Tube

Tube N.B.	Tube O.D.	Total O.D.	Clip	part no.
1/2	21mm	61mm	SZ1425D	FA0420
3/4	27mm	67mm	RZ1426D	FA0720
1	34mm	74mm	SZ7025D	FA0920
1 1/4	42mm	82mm	RZ7626D	FA1120
1 1/2	48mm	88mm	SZ1725D	FA1320
2	60mm	100mm	SZ10025D	FA1420
2 1/2	76mm	116mm	SZ1825D	FA1620
3	89mm	129mm	SZ12525D	FA1720
4	114mm	154mm	RZ15026D	FA1820
5	140mm	180mm	G62178M	FA1920
6	165mm	205mm	G62208M	FA2020

# PHENOLIC & WOOD BLOCK RANGE



## 25mm THICKNESS - For Steel Tube

Tube N.B.	Tube O.D.	Total O.D.	Clip	part no.
1/2	21mm	71mm	SZ7025D	FA0425
3/4	27mm	77mm	SZ1625D	FA0725
1	34mm	84mm	SZ8325D	FA0925
1 1/4	42mm	92mm	RZ8326D	FA1125
1 1/2	48mm	98mm	SZ10025D	FA1325
2	60mm	110mm	SZ11025D	FA1425
2 1/2	76mm	126mm	SZ12525D	FA1625
3	89mm	139mm	SZ1925D	FA1725
4	114mm	164mm	RZ9926D	FA1825
5	140mm	190mm	G62193M	FA1925
6	165mm	215mm	G6221M	FA2025

## 40mm THICKNESS - For Steel Tube

Tube N.B.	Tube O.D.	Total O.D.	Clip	part no.
1/2	21mm	101mm	SZ10025D	FA0440
3/4	27mm	107mm	SZ11025D	FA0740
1	34mm	114mm	SZ1825D	FA0940
1 1/4	42mm	122mm	RZ1826D	FA1140
1 1/2	48mm	128mm	SZ12525D	FA1340
2	60mm	140mm	SZ1925D	FA1440
2 1/2	76mm	156mm	SZ9925D	FA1640
3	89mm	169mm	SZ2025D	FA1740
4	114mm	194mm	G62199M	FA1840
5	140mm	220mm	G6221M	FA1940
6	165mm	245mm	G62244M	FA2040

## 30mm THICKNESS - For Steel Tube

Tube N.B.	Tube O.D.	Total O.D.	Clip	part no.
1/2	21mm	81mm	SZ8325D	FA0430
3/4	27mm	87mm	RZ7626D	FA0730
1	34mm	94mm	RZ8326D	FA0930
1 1/4	42mm	102mm	SZ10025D	FA1130
1 1/2	48mm	108mm	SZ11025D	FA1330
2	60mm	120mm	RZ1826D	FA1430
2 1/2	76mm	136mm	SZ1925D	FA1630
3	89mm	149mm	SZ15025D	FA1730
4	114mm	174mm	RZ2026D	FA1830
5	140mm	200mm	G62199M	FA1930
6	165mm	225mm	G62225M	FA2030

## 50mm THICKNESS - For Steel Tube

Tube N.B.	Tube O.D.	Total O.D.	Clip	part no.
1/2	21mm	121mm	RZ1826D	FA0450
3/4	27mm	127mm	SZ12525D	FA0750
1	34mm	134mm	SZ9325D	FA0950
1 1/4	42mm	142mm	SZ1925D	FA1150
1 1/2	48mm	148mm	SZ15025D	FA1350
2	60mm	160mm	SZ9925D	FA1450
2 1/2	76mm	176mm	RZ2026D	FA1650
3	89mm	189mm	G62186M	FA1750
4	114mm	214mm	G6221M	FA1850
5	140mm	240mm	G62244M	FA1950
6	165mm	265mm	G6280M	FA2050